

## Notes for the 2007/08 Club Net Stakes and Funding Statistics

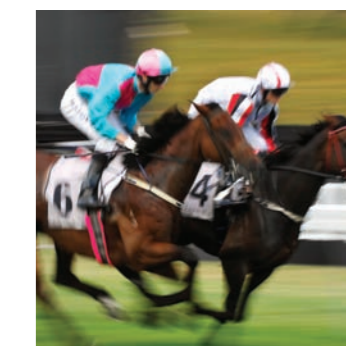
The New Zealand Racing Board in conjunction with Greyhound Racing New Zealand, Harness Racing New Zealand and New Zealand Thoroughbred Racing have compiled the following statistics for the 2007/08 racing season.

These statistics do not form part of the New Zealand Racing Board Annual Report and have not been subject to external audit.

The reported Board Direct and Code Funding totals reflect the payments made by the New Zealand Racing Board consistent with the agreed funding policies, but do not take into account other income streams generated by the clubs independently.

The following Notes should be read in conjunction with the statistical information.

- 1. Number of race meetings** represents licenses issued to and run by racing clubs. This total includes licenses issued for more or less than 10 races.
  - Thoroughbred – under NZTR's Free Racing, nominations and acceptances are only charged on group and listed races. NZTR also contributes direct financial contributions to Thoroughbred participants by way of additional stakes towards the fillies & mares and stayers series, payment of riding fees on behalf of owners for all races up to and including Rating 80 and payment of a compensation fee to jockeys where their horse has been scratched.
- 2. Number of races run by club.** Because of abandoned races, meetings with more or less than 10 races, and additional races run at existing meetings, these totals do not always equate to 10 races per meeting. Note also that Harness races run as part of a Thoroughbred clubs programme have been separated out.
  - Greyhound – GRNZ makes significant direct financial contributions to Greyhound participants by way of the Owners MTA Unplaced Runners Scheme and the Breeders & Owners NZ Bred Maiden Win Scheme.
- 3. Total number of starts by horses or greyhounds.** Individual horses may have started more than once over a number of meetings held by an individual club, and may have started a number of times across all meetings.
- 4. A club's "Off-course Turnover"** is defined as the racing totalisator sales generated by the TAB on a club's product. "On-course Turnover" is the total of all racing totalisator sales at a club's track on raceday. It includes betting on its own product, other track's product, as well as overseas and TAB specific product. In instances where a number of club's operate in a common on-course environment on raceday the ontrack turnover is attributed to the designated host club. "Racing FOB Turnover" is the total Fixed Odds sales from all sources on a club's product.
- 5. Net stakes have been calculated** by taking the club contribution to total stakes paid to owners, inclusive of travel subsidies etc, and subtracting nomination and acceptance fees received by racing clubs. Taking into account these items provides a truer reflection of racing clubs' direct return to owners. Other issues to take into consideration when looking at net returns to participants at a Code level are:
  - Harness – the majority of Harness clubs do not charge nomination and acceptance fees.
- 6. Net Funding paid to clubs** is the total amount distributed to an individual racing club by the New Zealand Racing Board on behalf of itself and the Code governing body. This figure includes the base funding paid under the Code Funding Policies, on-course turnover funding and various additional funding received by the club. Additional funding may include Group, Listed and Feature race subsidies, Fixed Odds racing turnover funding, payments made to clubs for races taken for betting in Australia and other guarantees, subsidies and payments.
- 7. % Net Stakes / Net Funding** is effectively a measure of how much of an individual racing club's funding is returned to owners in the form of stakes. It can be a useful point of comparison between clubs and between Codes. What should be noted, however, is the factors that can influence this figure – a club's commitment to other expenses, such as a training centre; a club's ability to source sponsorship or drive on-course turnover depending on their location geographically and; the placement of their meeting in the calendar.



## Club Net Stakes and Funding Statistics 2007/08



## Thoroughbred Clubs

| Club                | Meetings | Races | Starters | Off-course Totalisator and FOB Turnover NZ\$'000 | On-course Tote Turnover NZ\$'000 | Total Turnover NZ\$'000 | Stakes Paid NZ\$'000 | Nominations and Acceptances NZ\$'000 | Net Stakes NZ\$'000 | Board Direct and Code Funding NZ\$'000 | On-course Turnover Funding NZ\$'000 | Net Funding NZ\$'000 | Stakes to Funding Ratio |
|---------------------|----------|-------|----------|--|----------------------------------|-------------------------|----------------------|--------------------------------------|---------------------|--|-------------------------------------|----------------------|-------------------------|
| Ashburton RC        | 4        | 40    | 421      | 3,798  | 204                              | 4,002                   | 388                  | 5                                    | 383                 | 441                                    | 33                                  | 473                  | 80.93%                  |
| Auckland RC         | 24       | 222   | 2,522    | 52,016   | 9,254                            | 61,271                  | 9,873                | 1,130                                | 8,743               | 8,560                                  | 1,481                               | 10,041               | 87.07%                  |
| Avondale JC         | 15       | 127   | 1,426    | 19,799   | 1,662                            | 21,460                  | 1,892                | 59                                   | 1,833               | 2,258                                  | 266                                 | 2,524                | 72.61%                  |
| Banks Peninsula RC  | 1        | 10    | 111      | 1,048  | 107                              | 1,154                   | 100                  | 0                                    | 100                 | 95                                     | 17                                  | 113                  | 88.87%                  |
| Beaumont RC         | 1        | 9     | 78       | 1,132  | 35                               | 1,167                   | 85                   | 0                                    | 85                  | 150                                    | 6                                   | 155                  | 54.69%                  |
| Cambridge JC        | 3        | 28    | 355      | 4,340  | 408                              | 4,748                   | 641                  | 21                                   | 620                 | 605                                    | 65                                  | 671                  | 92.41%                  |
| Canterbury Racing   | 26       | 260   | 2,882    | 37,706   | 4,700                            | 42,406                  | 5,909                | 394                                  | 5,515               | 6,049                                  | 752                                 | 6,801                | 81.09%                  |
| Central Otago RC    | 1        | 8     | 78       | 788  | 144                              | 932                     | 97                   | 0                                    | 97                  | 117                                    | 23                                  | 140                  | 69.29%                  |
| Counties RC         | 9        | 82    | 917      | 11,246   | 1,164                            | 12,410                  | 1,442                | 63                                   | 1,378               | 1,451                                  | 186                                 | 1,637                | 84.20%                  |
| Dargaville RC       | 2        | 19    | 161      | 1,477  | 251                              | 1,728                   | 147                  | 0                                    | 147                 | 159                                    | 40                                  | 199                  | 74.10%                  |
| Egmont RC           | 3        | 31    | 312      | 3,883  | 306                              | 4,189                   | 409                  | 8                                    | 401                 | 465                                    | 49                                  | 514                  | 77.98%                  |
| Feilding JC         | 3        | 28    | 346      | 4,504  | 446                              | 4,951                   | 437                  | 13                                   | 424                 | 496                                    | 71                                  | 567                  | 74.80%                  |
| Foxton RC           | 4        | 42    | 554      | 5,257  | 325                              | 5,583                   | 398                  | 0                                    | 398                 | 484                                    | 52                                  | 536                  | 74.21%                  |
| Gore RC             | 4        | 36    | 374      | 3,013  | 141                              | 3,154                   | 351                  | 5                                    | 346                 | 409                                    | 23                                  | 432                  | 80.10%                  |
| Greymouth JC        | 1        | 10    | 89       | 1,017  | 112                              | 1,129                   | 113                  | 0                                    | 113                 | 134                                    | 18                                  | 152                  | 74.51%                  |
| Hawkes Bay RI       | 18       | 162   | 1,697    | 26,439   | 3,502                            | 29,941                  | 4,766                | 750                                  | 4,016               | 3,652                                  | 560                                 | 4,212                | 95.35%                  |
| Kumara RC           | 1        | 10    | 113      | 1,272  | 368                              | 1,640                   | 122                  | -7                                   | 129                 | 153                                    | 59                                  | 212                  | 60.98%                  |
| Kuwrow JC           | 1        | 10    | 98       | 1,013  | 132                              | 1,145                   | 108                  | 0                                    | 108                 | 131                                    | 21                                  | 152                  | 71.02%                  |
| Levin RC            | 4        | 40    | 459      | 6,026  | 593                              | 6,620                   | 875                  | 144                                  | 731                 | 862                                    | 95                                  | 957                  | 76.38%                  |
| Manawatu RC         | 8        | 78    | 929      | 14,750   | 1,402                            | 16,152                  | 1,989                | 35                                   | 1,954               | 2,137                                  | 224                                 | 2,361                | 82.78%                  |
| Marlborough RC      | 2        | 18    | 196      | 1,630  | 132                              | 1,761                   | 173                  | 0                                    | 173                 | 169                                    | 21                                  | 190                  | 90.83%                  |
| Marton JC           | 3        | 27    | 341      | 5,660  | 378                              | 6,038                   | 646                  | 21                                   | 625                 | 777                                    | 60                                  | 838                  | 74.53%                  |
| Masterton RC        | 2        | 19    | 211      | 2,693  | 263                              | 2,957                   | 319                  | 5                                    | 314                 | 351                                    | 42                                  | 394                  | 79.85%                  |
| Oamaru JC           | 4        | 38    | 353      | 3,202  | 106                              | 3,308                   | 319                  | 0                                    | 319                 | 434                                    | 17                                  | 451                  | 70.79%                  |
| Opunake RC          | 1        | 10    | 102      | 1,063  | 109                              | 1,172                   | 68                   | 0                                    | 68                  | 110                                    | 17                                  | 127                  | 53.49%                  |
| Otago RC            | 10       | 93    | 978      | 10,105   | 1,179                            | 11,284                  | 1,266                | 22                                   | 1,244               | 1,481                                  | 189                                 | 1,670                | 74.52%                  |
| Otaki-Maori RC      | 11       | 94    | 970      | 11,105   | 798                              | 11,903                  | 1,247                | 15                                   | 1,231               | 1,393                                  | 128                                 | 1,521                | 80.96%                  |
| Paeroa RC           | 7        | 59    | 648      | 5,787  | 482                              | 6,269                   | 478                  | -2                                   | 481                 | 606                                    | 77                                  | 683                  | 70.36%                  |
| Pakuranga HC        | 1        | 9     | 95       | 1,920  | 204                              | 2,125                   | 155                  | 2                                    | 154                 | 233                                    | 33                                  | 266                  | 57.78%                  |
| Poverty Bay TFC     | 2        | 20    | 183      | 1,937  | 195                              | 2,132                   | 151                  | -3                                   | 154                 | 172                                    | 31                                  | 203                  | 75.82%                  |
| Racing Matamata     | 10       | 93    | 1,057    | 12,995   | 827                              | 13,822                  | 1,303                | 29                                   | 1,274               | 1,543                                  | 132                                 | 1,676                | 76.03%                  |
| Racing Rotorua      | 10       | 82    | 854      | 10,413   | 925                              | 11,338                  | 1,043                | 36                                   | 1,007               | 1,119                                  | 148                                 | 1,267                | 79.51%                  |
| Racing Taupo        | 3        | 29    | 280      | 3,315  | 340                              | 3,655                   | 216                  | 0                                    | 217                 | 260                                    | 54                                  | 315                  | 68.81%                  |
| Racing Tauranga     | 9        | 82    | 959      | 14,206   | 2,078                            | 16,284                  | 1,753                | 11                                   | 1,742               | 1,818                                  | 333                                 | 2,150                | 81.03%                  |
| Racing Te Aroha     | 8        | 73    | 817      | 9,427  | 856                              | 10,282                  | 984                  | 20                                   | 963                 | 1,074                                  | 137                                 | 1,211                | 79.52%                  |
| Rangitikei RC       | 2        | 19    | 235      | 2,445  | 183                              | 2,628                   | 268                  | 7                                    | 261                 | 268                                    | 29                                  | 297                  | 87.89%                  |
| Reefton JC          | 1        | 10    | 101      | 1,064  | 105                              | 1,169                   | 105                  | 0                                    | 105                 | 96                                     | 17                                  | 112                  | 93.43%                  |
| Riverton RC         | 4        | 41    | 415      | 3,995  | 464                              | 4,459                   | 548                  | 0                                    | 548                 | 578                                    | 74                                  | 652                  | 83.99%                  |
| South Canterbury RC | 4        | 31    | 302      | 3,470  | 221                              | 3,691                   | 320                  | 4                                    | 316                 | 411                                    | 35                                  | 447                  | 70.76%                  |
| South Waikato RC    | 1        | 10    | 117      | 1,199  | 166                              | 1,365                   | 74                   | 0                                    | 74                  | 96                                     | 27                                  | 122                  | 60.65%                  |
| Southland RC        | 6        | 57    | 588      | 5,536  | 479                              | 6,015                   | 595                  | 9                                    | 586                 | 681                                    | 77                                  | 757                  | 77.39%                  |
| Stratford RC        | 1        | 8     | 78       | 1,022  | 144                              | 1,166                   | 78                   | 0                                    | 78                  | 76                                     | 23                                  | 99                   | 78.49%                  |
| Tapanui RC          | 1        | 9     | 93       | 953  | 78                               | 1,032                   | 69                   | 0                                    | 69                  | 89                                     | 12                                  | 101                  | 67.78%                  |
| Taranaki RC         | 11       | 101   | 973      | 12,639   | 1,168                            | 13,808                  | 1,303                | 19                                   | 1,284               | 1,510                                  | 187                                 | 1,697                | 75.69%                  |
| Taumarunui RC       | 1        | 8     | 107      | 1,974  | 199                              | 2,173                   | 305                  | 9                                    | 296                 | 359                                    | 32                                  | 391                  | 75.61%                  |
| Thames JC           | 2        | 18    | 177      | 2,231  | 337                              | 2,568                   | 223                  | 0                                    | 223                 | 254                                    | 54                                  | 308                  | 72.55%                  |
| Waikato RC          | 15       | 141   | 1,707    | 27,425   | 2,568                            | 29,993                  | 3,329                | 106                                  | 3,223               | 3,783                                  | 411                                 | 4,194                | 76.86%                  |
| Waikouaiti RC       | 1        | 8     | 75       | 1,085  | 149                              | 1,233                   | 79                   | 0                                    | 79                  | 85                                     | 24                                  | 109                  | 72.67%                  |
| Waimate RC          | 1        | 9     | 87       | 827  | 36                               | 863                     | 78                   | 0                                    | 78                  | 86                                     | 6                                   | 92                   | 85.11%                  |

## Thoroughbred Clubs (cont.)

| Club                                      | Meetings   | Races        | Starters      | Off-course Totalisator and FOB Turnover NZ\$'000 | On-course Tote Turnover NZ\$'000 | Total Turnover NZ\$'000 | Stakes Paid NZ\$'000 | Nominations and Acceptances NZ\$'000 | Net Stakes NZ\$'000 | Board Direct and Code Funding NZ\$'000 | On-course Turnover Funding NZ\$'000 | Net Funding NZ\$'000 | Stakes to Funding Ratio |
|---|------------|--------------|---------------|--|----------------------------------|-------------------------|----------------------|--------------------------------------|---------------------|--|-------------------------------------|----------------------|-------------------------|
| Waipa RC                                  | 8          | 65           | 672           | 8,424  | 423                              | 8,847                   | 619                  | 0                                    | 619                 | 838                                    | 68                                  | 906                  | 68.33%                  |
| Waipukurau JC                             | 1          | 10           | 119           | 1,263  | 151                              | 1,414                   | 84                   | 0                                    | 84                  | 91                                     | 24                                  | 115                  | 73.12%                  |
| Wairarapa RC                              | 2          | 16           | 139           | 2,163  | 749                              | 2,912                   | 221                  | 5                                    | 215                 | 249                                    | 110                                 | 359                  | 59.96%                  |
| Wairio JC                                 | 2          | 10           | 122           | 660  | 24                               | 684                     | 109                  | 0                                    | 109                 | 113                                    | 4                                   | 117                  | 93.25%                  |
| Wairoa RC                                 | 2          | 16           | 128           | 1,421  | 137                              | 1,558                   | 132                  | -3                                   | 135                 | 149                                    | 22                                  | 171                  | 78.98%                  |
| Wanganui JC                               | 9          | 86           | 991           | 11,317   | 802                              | 12,119                  | 1,064                | 23                                   | 1,041               | 1,258                                  | 128                                 | 1,386                | 75.07%                  |
| Waverley RC                               | 3          | 23           | 228           | 2,698  | 279                              | 2,977                   | 327                  | 0                                    | 327                 | 300                                    | 45                                  | 345                  | 94.73%                  |
| Wellington RC                             | 10         | 99           | 1,138         | 23,406   | 3,731                            | 27,137                  | 4,309                | 273                                  | 4,036               | 4,131                                  | 597                                 | 4,728                | 85.37%                  |
| Westland RC                               | 2          | 19           | 159           | 1,431  | 106                              | 1,537                   | 191                  | 0                                    | 191                 | 187                                    | 17                                  | 204                  | 93.85%                  |
| Whakatane RC                              | 2          | 16           | 155           | 1,579  | 148                              | 1,727                   | 127                  | 0                                    | 127                 | 163                                    | 24                                  | 186                  | 68.18%                  |
| Whangarei RC                              | 9          | 77           | 808           | 10,373   | 1,196                            | 11,569                  | 849                  | -6                                   | 855                 | 1,053                                  | 169                                 | 1,222                | 69.98%                  |
| Winton JC                                 | 2          | 17           | 174           | 1,284  | 46                               | 1,331                   | 127                  | 0                                    | 127                 | 159                                    | 7                                   | 166                  | 76.44%                  |
| Woodville-Pahiatua RC                     | 4          | 38           | 434           | 4,915  | 343                              | 5,258                   | 334                  | 0                                    | 334                 | 442                                    | 55                                  | 496                  | 67.28%                  |
| Wyndham RC                                | 1          | 10           | 86            | 863  | 40                               | 903                     | 80                   | 0                                    | 80                  | 92                                     | 6                                   | 98                   | 81.44%                  |
| <b>Total Thoroughbred Clubs</b>           | <b>324</b> | <b>2,970</b> | <b>32,374</b> | <b>433,647</b>                                   | <b>48,604</b>                    | <b>482,251</b>          | <b>56,208</b>        | <b>3,220</b>                         | <b>52,988</b>       | <b>57,942</b>                          | <b>7,744</b>                        | <b>65,686</b>        | <b>80.67%</b>           |
| <b>Harness Races @ Thoroughbred Clubs</b> |            |              |               |  |                                  |                         |                      |                                      |                     |  |                                     |                      |                         |
| Marlborough RC                            | 2          | 4            | 51            | 181  | 0                                | 181                     | 32                   | 0                                    | 32                  | 33                                     | 0                                   | 33                   | 96.75%                  |
| <b>Total Thoroughbred Clubs</b>           | <b>326</b> | <b>2,974</b> | <b>32,425</b> | <b>433,828</b>                                   | <b>48,604</b>                    | <b>482,432</b>          | <b>56,240</b>        | <b>3,220</b>                         | <b>53,020</b>       | <b>57,975</b>                          | <b>7,744</b>                        | <b>65,719</b>        | <b>80.68%</b>           |

## Greyhound Clubs

| Club                         | Meetings   | Races        | Starters      | Off-course Totalisator and FOB Turnover NZ\$'000 | On-course Tote Turnover NZ\$'000 | Total Turnover NZ\$'000 | Stakes Paid NZ\$'000 | Nominations and Acceptances NZ\$'000 | Net Stakes NZ\$'000 | Board Direct and Code Funding NZ\$'000 | On-course Turnover Funding NZ\$'000 | Net Funding NZ\$'000 | Stakes to Funding Ratio |
|------------------------------|------------|--------------|---------------|--|----------------------------------|-------------------------|----------------------|--------------------------------------|---------------------|--|-------------------------------------|----------------------|-------------------------|
| Ashburton GRC                | 1          | 10           | 79            | 349  | 15                               | 365                     | 18                   | 0                                    | 18                  | 33                                     | 2                                   | 36                   | 51.85%                  |
| Auckland GRC                 | 63         | 639          | 5,029         | 22,747   | 1,472                            | 24,219                  | 1,288                | 0                                    | 1,288               | 1,891                                  | 235                                 | 2,127                | 60.57%                  |
| Christchurch GRC             | 74         | 1,056        | 8,320         | 27,747   | 1,151                            | 28,899                  | 2,069                | 0                                    | 2,069               | 2,880                                  | 184                                 | 3,064                | 67.54%                  |
| Manawatu GRC                 | 50         | 509          | 3,957         | 11,402   | 296                              | 11,698                  | 847                  | 0                                    | 847                 | 1,353                                  | 47                                  | 1,401                | 60.43%                  |
| Otago GRC                    | 20         | 200          | 1,583         | 4,662  | 44                               | 4,706                   | 360                  | 0                                    | 360                 | 602                                    | 7                                   | 609                  | 59.03%                  |
| Southland GRC                | 20         | 220          | 1,708         | 5,351  | 56                               | 5,407                   | 391                  | 0                                    | 391                 | 637                                    | 9                                   | 646                  | 60.51%                  |
| Taranaki GRC                 | 1          | 10           | 79            | 354  | 7                                | 361                     | 15                   | 0                                    | 15                  | 30                                     | 1                                   | 31                   | 49.15%                  |
| Tokoroa GRC                  | 1          | 12           | 96            | 307  | 5                                | 312                     | 22                   | 0                                    | 22                  | 40                                     | 1                                   | 41                   | 53.71%                  |
| Waikato & Districts GRC      | 39         | 397          | 3,121         | 13,616   | 111                              | 13,727                  | 781                  | 0                                    | 781                 | 1,231                                  | 18                                  | 1,249                | 62.50%                  |
| Wairarapa GRC                | 3          | 27           | 207           | 810  | 36                               | 845                     | 44                   | 0                                    | 44                  | 78                                     | 6                                   | 83                   | 53.26%                  |
| Wanganui GRC                 | 81         | 821          | 6,369         | 27,295   | 654                              | 27,949                  | 1,482                | 0                                    | 1,482               | 2,213                                  | 105                                 | 2,318                | 63.93%                  |
| Wellington GRC               | 5          | 53           | 416           | 1,886  | 150                              | 2,036                   | 163                  | 0                                    | 163                 | 213                                    | 28                                  | 241                  | 67.68%                  |
| <b>Total Greyhound Clubs</b> | <b>358</b> | <b>3,954</b> | <b>30,964</b> | <b>116,526</b>                                   | <b>3,996</b>                     | <b>120,522</b>          | <b>7,481</b>         | <b>0</b>                             | <b>7,481</b>        | <b>11,203</b>                          | <b>643</b>                          | <b>11,846</b>        | <b>63.15%</b>           |

## Harness Clubs

| Club                     | Meetings | Races | Starters | Off-course Totalisator and FOB Turnover NZ\$'000 | On-course Tote Turnover NZ\$'000 | Total Turnover NZ\$'000 | Stakes Paid NZ\$'000 | Nominations and Acceptances NZ\$'000 | Net Stakes NZ\$'000 | Board Direct and Code Funding NZ\$'000 | On-course Turnover Funding NZ\$'000 | Net Funding NZ\$'000 | Stakes to Funding Ratio |
|--------------------------|----------|-------|----------|--|----------------------------------|-------------------------|----------------------|--------------------------------------|---------------------|--|-------------------------------------|----------------------|-------------------------|
| Akaroa TC                | 1        | 11    | 164      | 1,055  | 119                              | 1,174                   | 101                  | 0                                    | 101                 | 115                                    | 19                                  | 134                  | 75.21%                  |
| Amberley TC              | 1        | 10    | 134      | 1,172  | 80                               | 1,253                   | 93                   | 0                                    | 93                  | 127                                    | 13                                  | 140                  | 66.58%                  |
| Ashburton TC             | 8        | 78    | 1,013    | 8,622  | 904                              | 9,526                   | 906                  | 0                                    | 906                 | 1,053                                  | 145                                 | 1,197                | 75.65%                  |
| Auckland TC              | 25       | 252   | 2,602    | 27,079   | 4,918                            | 31,997                  | 6,199                | 0                                    | 6,199               | 4,375                                  | 787                                 | 5,161                | 120.11%                 |
| Banks Peninsula TC       | 6        | 62    | 882      | 6,230  | 892                              | 7,122                   | 571                  | 0                                    | 571                 | 692                                    | 143                                 | 835                  | 68.39%                  |
| Bay of Plenty HRC        | 2        | 19    | 214      | 1,619  | 201                              | 1,820                   | 170                  | 0                                    | 170                 | 176                                    | 32                                  | 208                  | 81.90%                  |
| Cambridge-Te Awamutu HRC | 25       | 232   | 2,331    | 20,761   | 1,621                            | 22,382                  | 3,583                | 9                                    | 3,573               | 2,562                                  | 259                                 | 2,822                | 126.64%                 |
| Central Otago TC         | 1        | 12    | 132      | 1,286  | 315                              | 1,601                   | 136                  | 0                                    | 136                 | 133                                    | 50                                  | 183                  | 74.15%                  |
| Cheviot HRC              | 1        | 10    | 136      | 1,037  | 80                               | 1,117                   | 115                  | 3                                    | 112                 | 120                                    | 13                                  | 133                  | 84.44%                  |
| Forbury Park TC          | 21       | 210   | 2,491    | 19,143   | 670                              | 19,813                  | 1,780                | 0                                    | 1,780               | 2,146                                  | 107                                 | 2,254                | 78.99%                  |
| Franklin TC              | 8        | 77    | 791      | 6,597  | 1,328                            | 7,925                   | 808                  | 0                                    | 808                 | 797                                    | 212                                 | 1,010                | 80.04%                  |
|                          |          |       |          |  |                                  |                         |                      |                                      |                     |  |                                     |                      |                         |